

Figure 13. Axonometric view of Caves 2 and 3 with laserscanning technology.

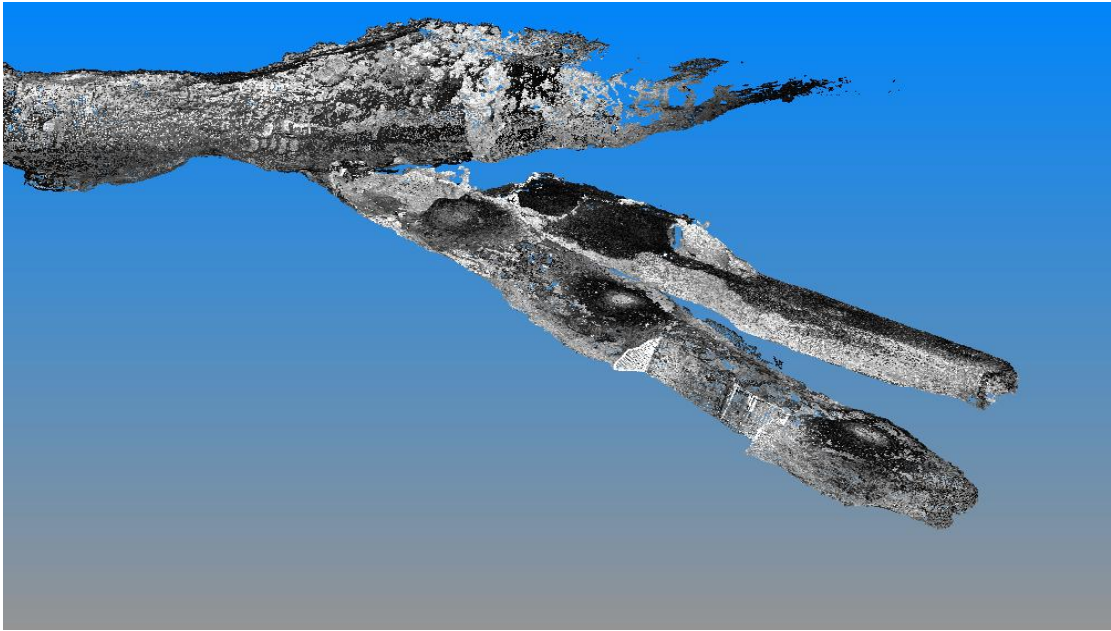


Figure 14. Map of Mersa/Wadi Gawasis with 2007-2008 excavated units.

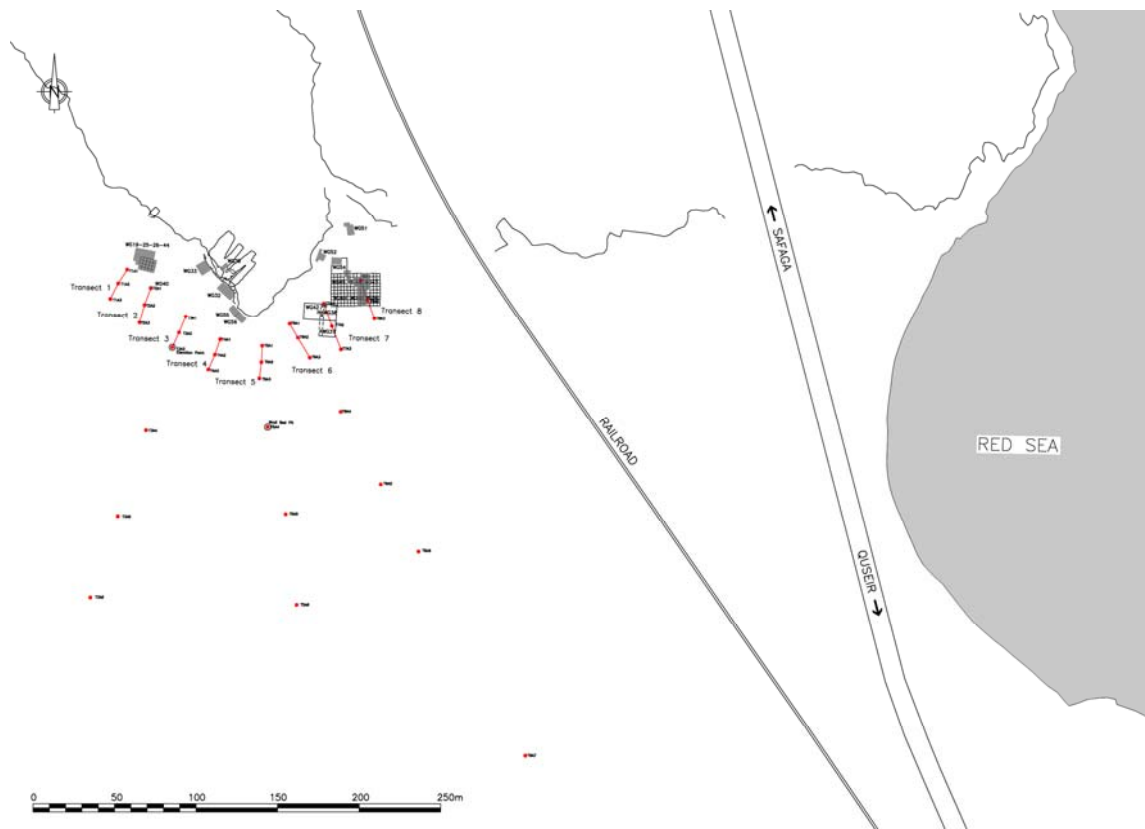


Figure 15. WG 33, general view.



Figure 16. WG 55, turtle bones.

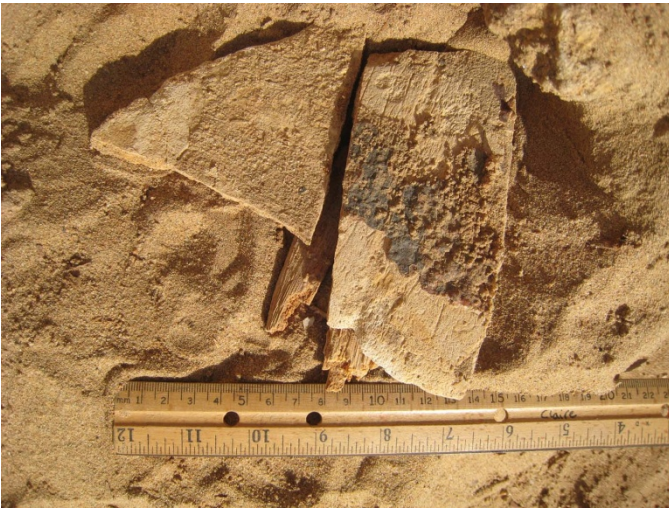


Figure 17. WG 55-56, stone structure (shrine?).



Figure 18. WG 45/46/47/48/49/50, general view of the “harbor area.”



Figure 19. Stela WG 16.



Figure 20. Stela WG 23.



Figure 21. Stela WG 28.



Figure 22. Papyrus PWG 01.

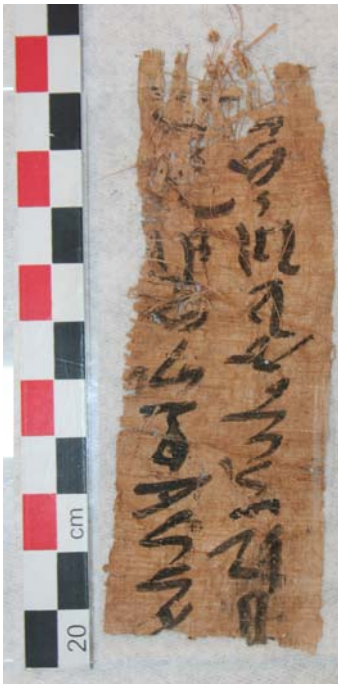


Figure 23. Seal S08/01.



Figure 24. Timber T75



Figure 25. Timber T72.



Figure 26. “Harbor area,” fragment of a storage jar.



Figure 27. WG 33, Canaanite ware sherds.



Figure 28. Proto-“Ancient Ona Ware.”



Figure 29. WG 54, jar stopper (?).



Figure 30. WG 32, knife or saw blade.



Figure 31. WG 54, possible piece of copper slag.



Figure 32. WG 55, repaired (?) textile fragment.

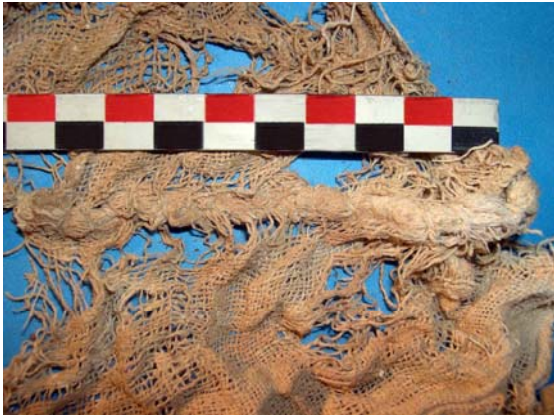


Figure 33. WG 55, possible knob.



Figure 34. Wood samples, 1st row: *Cedrus libani*, *Pinus* sp., pinoid pits, *Acacia nilotica*; 2nd row: *Avicennia marina*, *Faidherbia albida*, *Ficus sycomorus*, *Leptadenia pyrotechnica*, *Quercus* sp., evergreen; 3rd row: *Rhizophora/Bruguiera*, *Salix* sp., *Suaeda* sp., *Tamarix* sp., indet.

